

8 Robinson Avenue

Information Memorandum

2024

BUILTFORM
CAPITAL





DEVELOPMENT OVERVIEW

Council City of Belmont

Zoning Mixed Business LPS 15

Timing Q3, 2025

About

Discover a prime opportunity for both new and established businesses to operate and grow their business from.

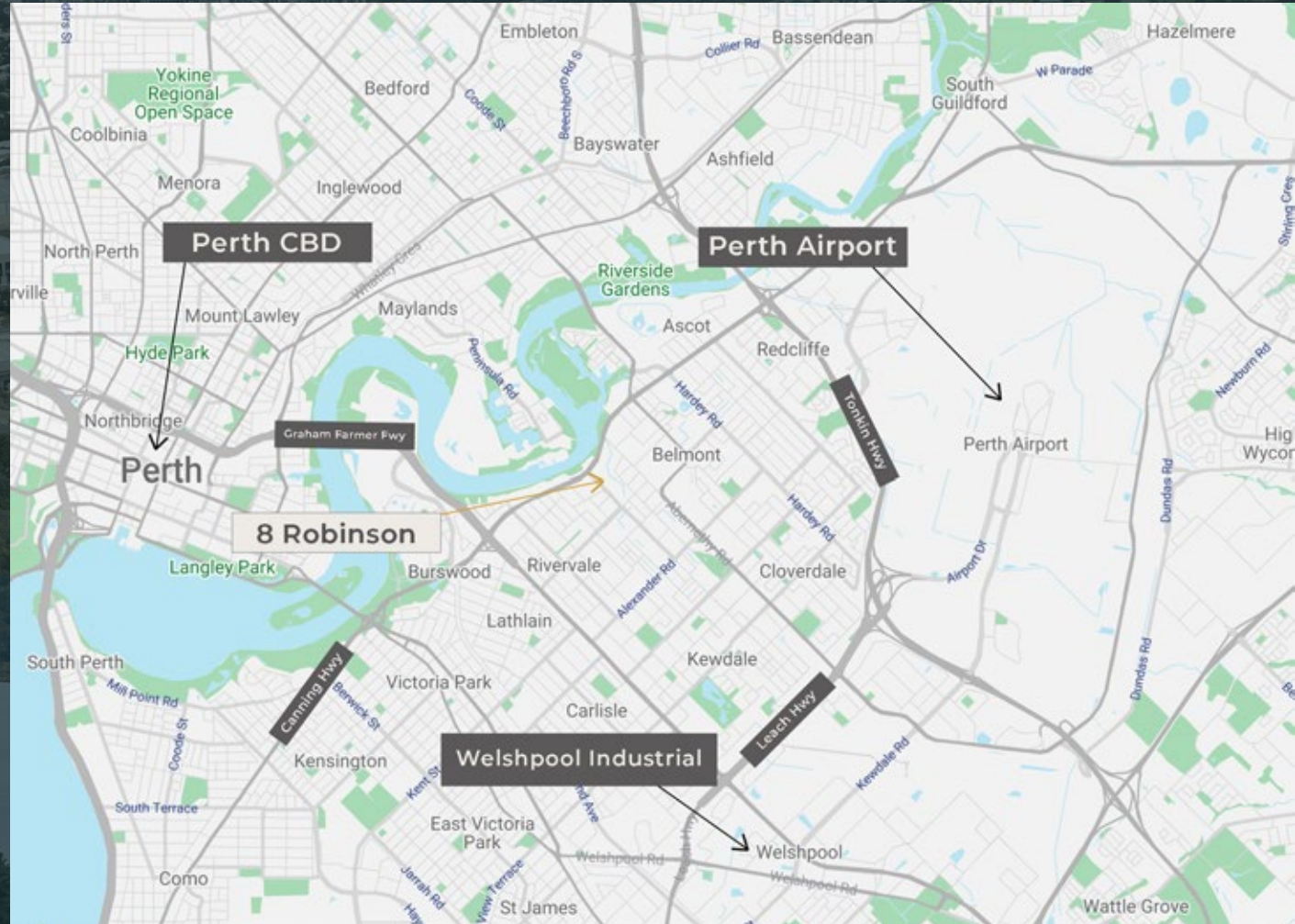
Brand-new and innovative designs to optimise business operations and flexibility. Limited offerings in warehouse, office and storage units.





LOCATION

- GREAT EASTERN HWY** 500m
- LEACH HWY** 3.5km
- TONKIN HWY** 4.5km
- PERTH AIRPORT** 7km
- PERTH CBD** 8km





WAREHOUSE UNITS

Building Inclusions:

7m high concrete tilt up panel walls

Individual remote controlled automatic roller door accesses

Hardstand driveway

First-floor Mezzanines with abundant lighting

LED high bays lights to warehouse

Modern finishes including timber cladding

197sqm - 494sqm

Warehouse units

available





EXCLUSIVE STORAGE UNITS

Individual basement storage units to facilitate business storage and personal storage.

55sqm - 327sqm
available

Building Inclusions

Remote controlled automatic roller door acceses

Secure individual access

Common driveway

Premium /
Modern finishes

LED lighting

Common amenities
room

O
F
F
I
C
E



1500sqm of A-Grade Office

Brand new dual-level office spanning 750 sqm per floor, sleek design and refined cladding integrate contemporary elegance.

Expansive panoramic windows ushering in abundant natural light, an outdoor balcony seamlessly intertwines indoor with the allure of the outdoors.

Floor Plans: Basement

Storage 13: 99sqm

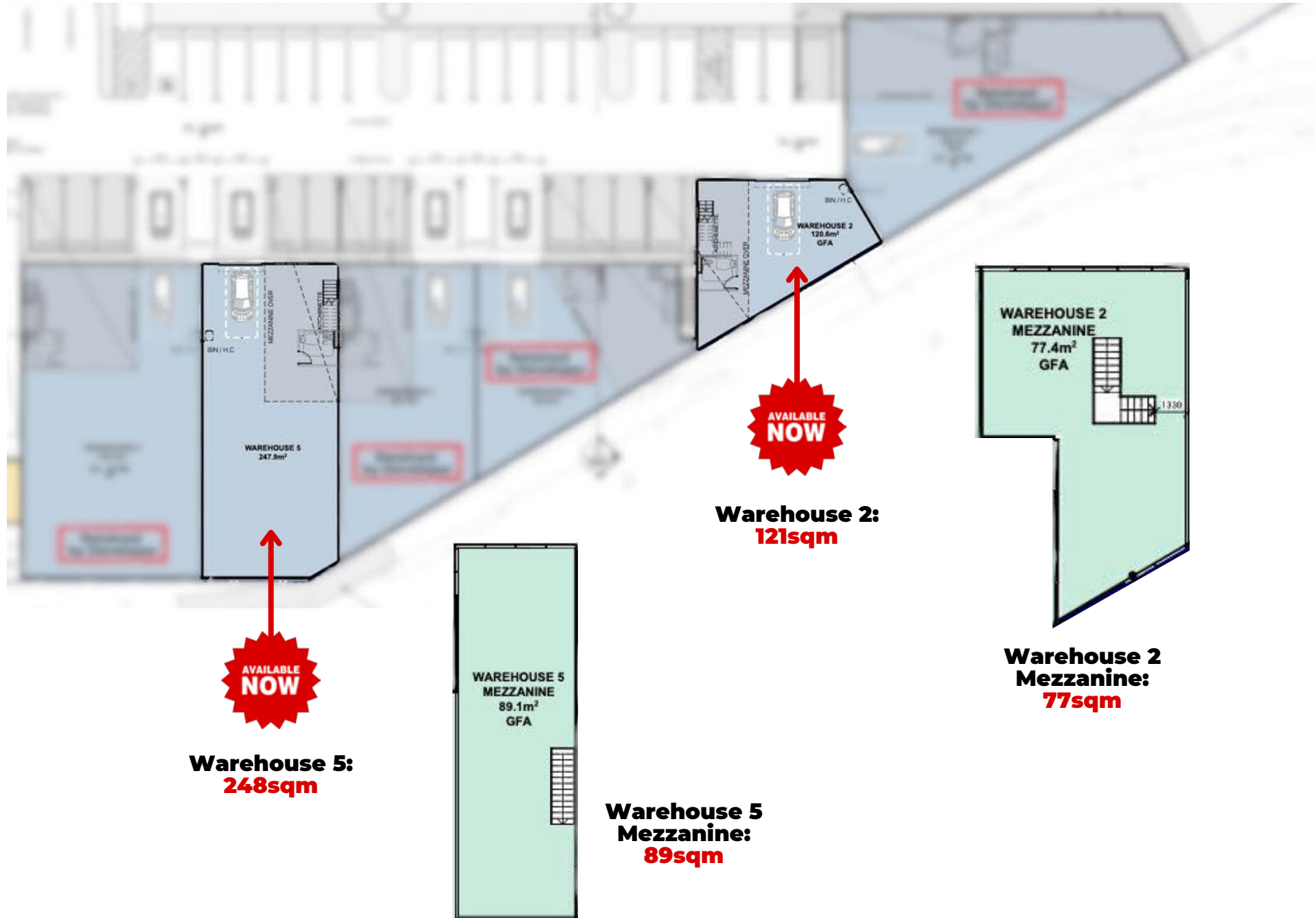


Storage 12: 59sqm



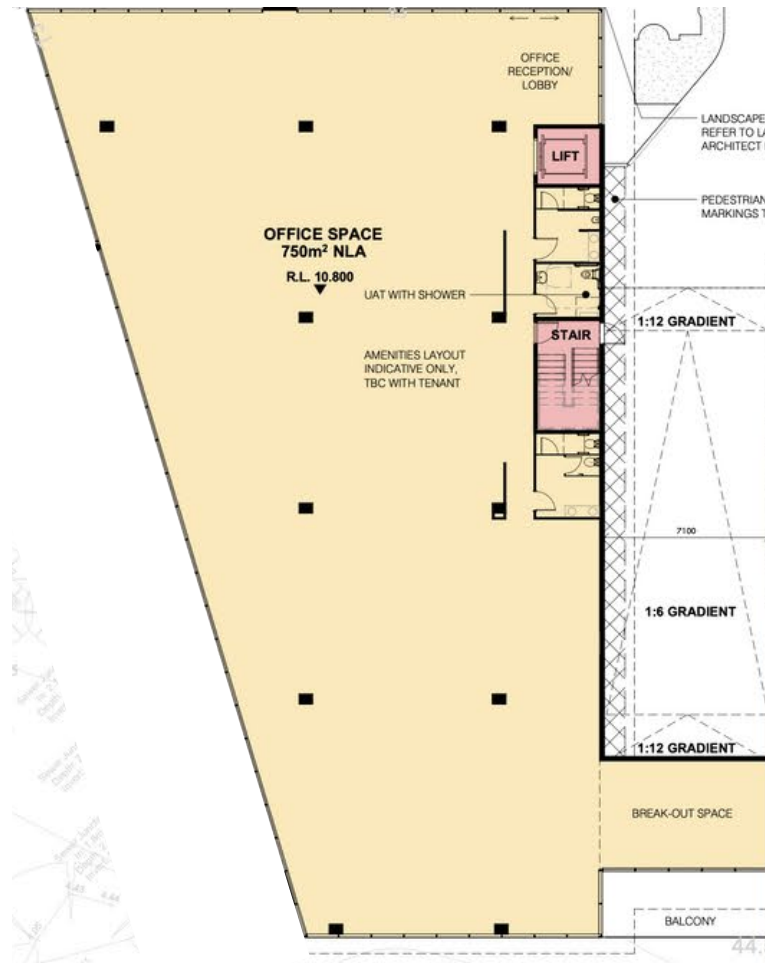
Storage 2: 98sqm
Mezzanine: 24sqm

Floor Plan: Warehouse

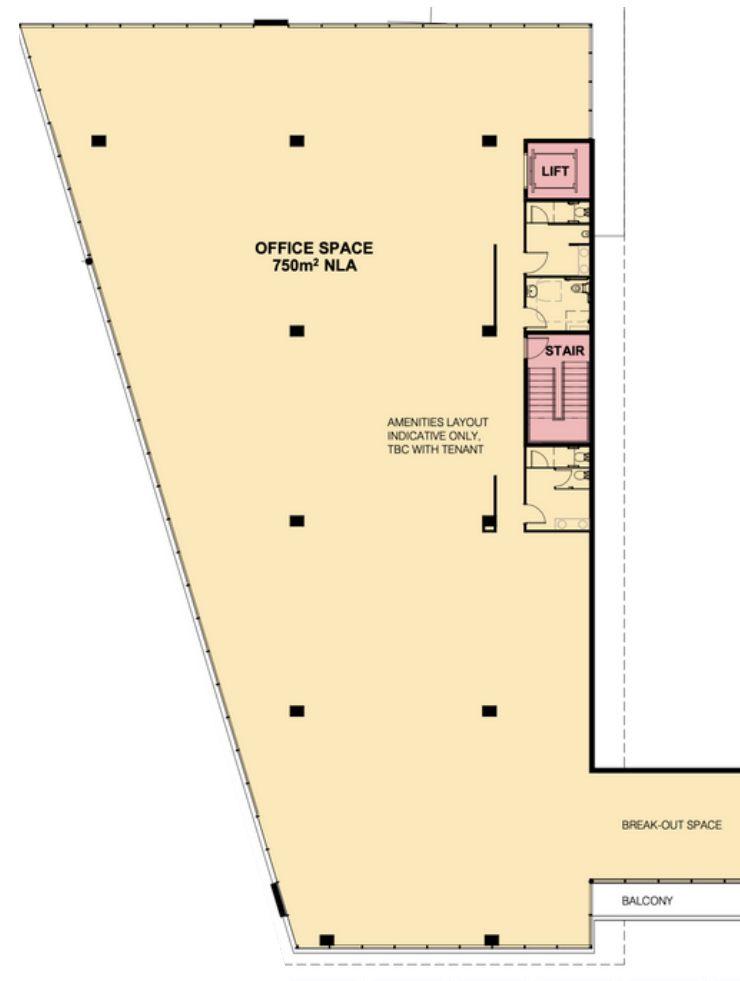


Floor Plans: Office

Office Ground Floor: 750sqm



Office First Floor: 750sqm



BUILTFORM

CAPITAL

For inquiries, please contact:



Industrial & General

Matt Lyford

Ph: 0419 934 904

E: matt@industrialandgeneral.com